

Ethercom

RS232 to RJ-45 converter

The Ethercom transforms standard RS232 peripherals into ethernet appliances. Access legacy serial devices through the Internet, transparently, whether locally or across the world, from one or more computers. Remove the dedicated wiring and simplify things by using standard ethernet wiring. All this is now possible thanks to the EtherCom.



Features:

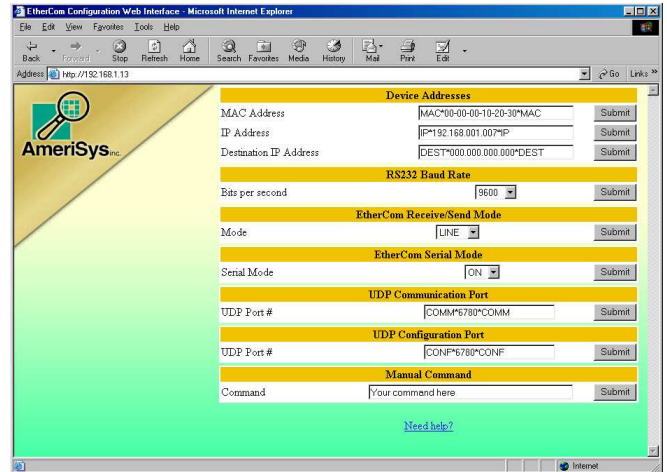
- ✓ Converts serial equipment into an Internet appliance
- ✓ Simple, web based configuration
- ✓ State of the art, compact design
- ✓ Open UDP/IP protocol
- ✓ Compatible to any IP-ready operating system
- ✓ Supports:
 - Guaranteed sequenced data delivery
 - Character by character modes
 - Line by line modes
 - Multiple baud rates
 - Normal Internet routing
 - Exclusive-host communications
 - Multi-host communications
 - Transparent hostless Internet tunnel (EtherCom to Ethercom)
- ✓ Free software terminal program
- ✓ Data security/encryption options available

Technical Specifications	
Model	EtherCom
Power supply	12 vdc
Temperature range	0 °C to +50 °C
Physical dimension (approx.)	3.85" (98 mm) X 1.69" (43 mm) X 0.85" (22 mm)
Inputs / Outputs	Ethernet and RS232
Communication Speed	Configurable
Visual indicator	Yellow and Green led for activity (Link and Lan)

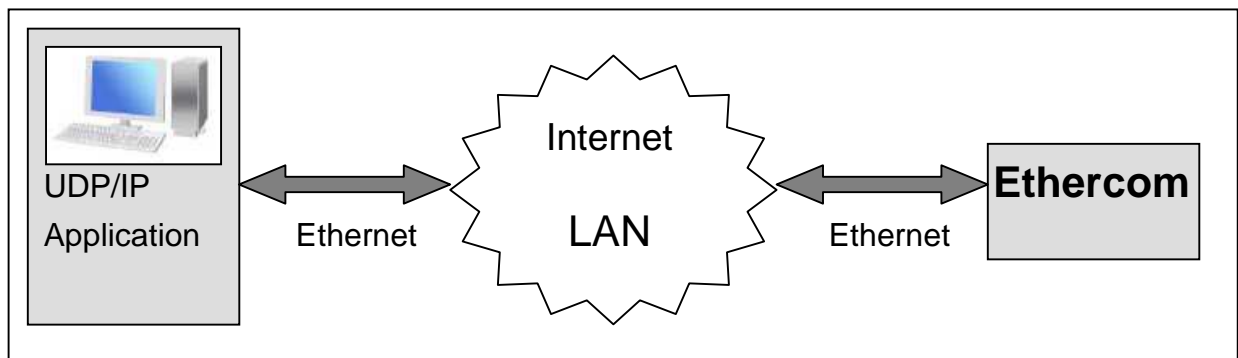
EtherCom Configuration Web Interface

Web based configuration is easy to use. Simply select an option, click on the desired mode and the desired parameter is set.

- ✓ No programs to install for the configuration
- ✓ Use your built-in browser, no other software required
- ✓ Select a parameter, click your desired mode
- ✓ Configuration is as simple as that



Connecting the EtherCom to a PC is a simple Ethernet connection at each end. For added security, your local area network (LAN) can span across the Internet wide area network (WAN) via a virtual private network (VPN) such as those provided by Cisco routers. Using the built in web server, assign an IP address and if desired, a MAC address to the EtherCom. Instruct your PC application to dialog with that address and the EtherCom's serial port is in service for you, locally or anywhere on the globe via internet.



Interface and specification is subject to change without notice

4230 Blvd. St Jean, s231
Montreal D.D.O Qc, Canada
Tel : (514) 620-8522 fax : (514) 620-3900
Info@amerisys.com